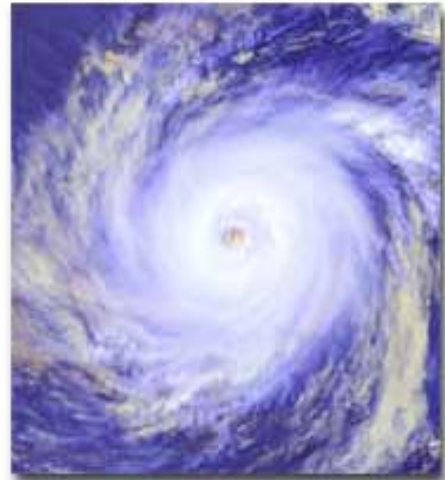




Severe Weather Operations (Summertime Edition)



**Review department operations and procedures for severe weather conditions.
Consider the following:**

- Severe Thunderstorm Warning
 - Tornado Watch
 - Tornado Warning
 - Flood Watch / Warning
- Hurricane or Tropical Storm Conditions

-What should you do if you spot severe weather?

-What station activities take place during these conditions?

-What response modifications (if any) are taken during these conditions?

Review Local Procedures and Disaster Plans